



# 0591.4 Battery Cover Instruction Manual

*Compatible with Ni-Cad Battery Pack **4066**, NiMH Battery Pack **4066.5** and Li-ion Battery Pack **4067** used on DS125, DS160 and DS161 strobes.*

The Battery Cover is designed to keep dirt and debris out of the Battery Pack contact points when the Battery Pack is removed from the Strobe Head. The Battery Cover DOES NOT create a waterproof seal.

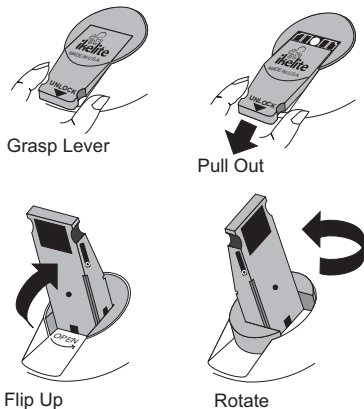
**Note:** The Battery Cover should be attached to the Battery Pack whenever traveling or when storing the battery pack separate from the strobe head.



## Battery Cover Attachment and Removal

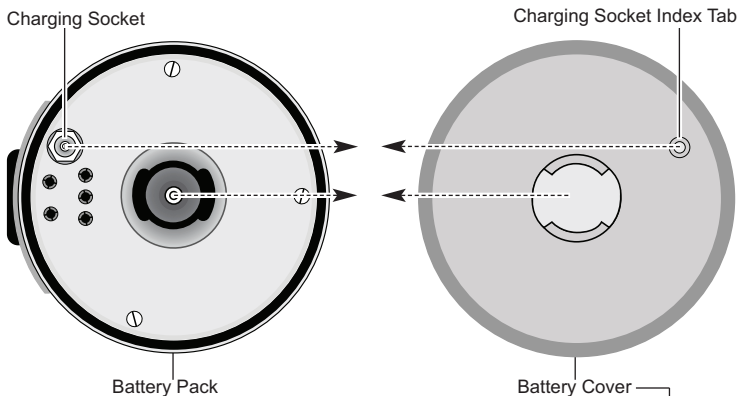
1. If the Battery Pack is connected to a Strobe Head, turn the strobe OFF. Place the strobe face down on a flat surface. The Battery Pack (rear section of the strobe) does NOT remain waterproof when removed from the strobe. Therefore, we suggest keeping the open portion of your Battery Pack pointed down when removing from a strobe, to eliminate the possibility of water droplets falling inside.
2. Slide the locking lever out by either grasping the bottom sides of the lever and pulling it out OR use your thumb to apply slight pressure to the top of the lever and slide it out, **Diagram 1**.
3. Flip the lever up and then rotate the lever counterclockwise 90°. The internal spring automatically pushes open the strobe. Lift the Battery Pack off of the strobe front. The rear section of the strobe is the Battery Pack.
4. Remove any water droplets from the Battery Pack using a soft cloth.
5. With the toggle in the *open position*, line up the Charging Socket Index Tab with the Charging Socket, **Diagram 2, page 3**.
6. Press the Battery Cover onto the open end of the Battery Pack, **Diagram 3, page 3**.
7. Hold the Battery Cover flush on the Battery Pack with one hand while rotating the toggle clockwise 90° with your other hand, **Diagram 4, page 4**.
8. Flip the Toggle down and push in to lock.

**Diagram 1**



## Attachment and Removal - continued

### Diagram 2



### Diagram 3

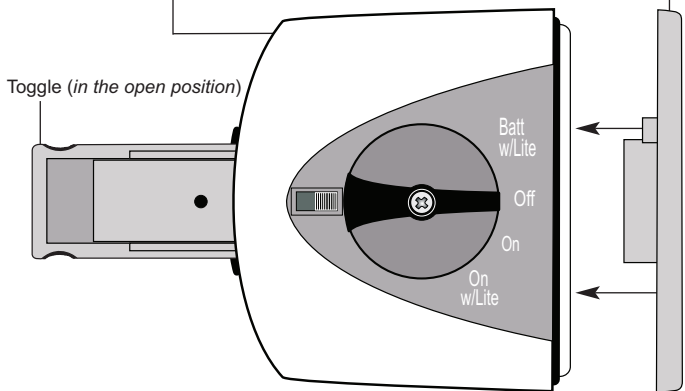
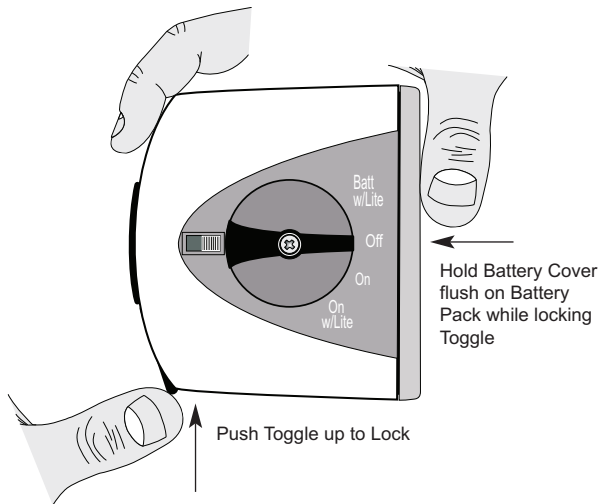


Diagram 4



### Ikelite Customer Support

Email: [ikelite@ikelite.com](mailto:ikelite@ikelite.com)

Phone: 317-923-4523

Fax: 317-924-7988



**Ikelite Underwater Systems**  
50 West 33rd Street  
Indianapolis, IN 46208 USA

[www.ikelite.com](http://www.ikelite.com)

© 2014 Ikelite Underwater Systems